

# GGA

**GLASS TONG HEAD GRIPPER**



## ***Glass Container Industry***

*Rugged design and long life for hot glass bottle transferring applications*



**ISO 9001  
REGISTERED**  
Quality Management  
System Certified

MGGAML01-EU

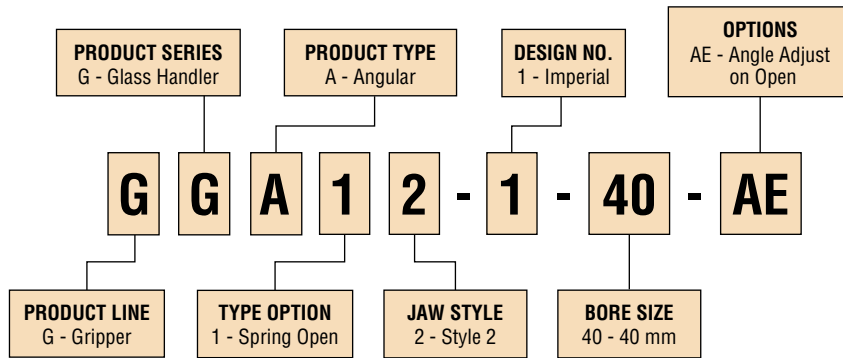


PHD is a member of the  
MAC Distributor Network

**phd**   
SOLUTIONS FOR INDUSTRIAL AUTOMATION

[www.phdinc.com](http://www.phdinc.com)

# ORDERING DATA: SERIES GGA GLASS GRIPPER



**GGA12-1-40**  
(Non-adjustable)  
Replaces previous ML315988



**GGA12-1-40-AE**  
(Adjustable)  
Replaces previous ML316195

## BENEFITS: SERIES GGA GLASS GRIPPER

The design of the new GGA Glass Gripper incorporates a cam slot that provide a locking ramp which locks in place when jaws are full open. In addition, it has a cushioning through the cam slot design which also provides a very smooth closing.

Optional -AE provides an easy possibility to adjust the opening angle of the jaws.

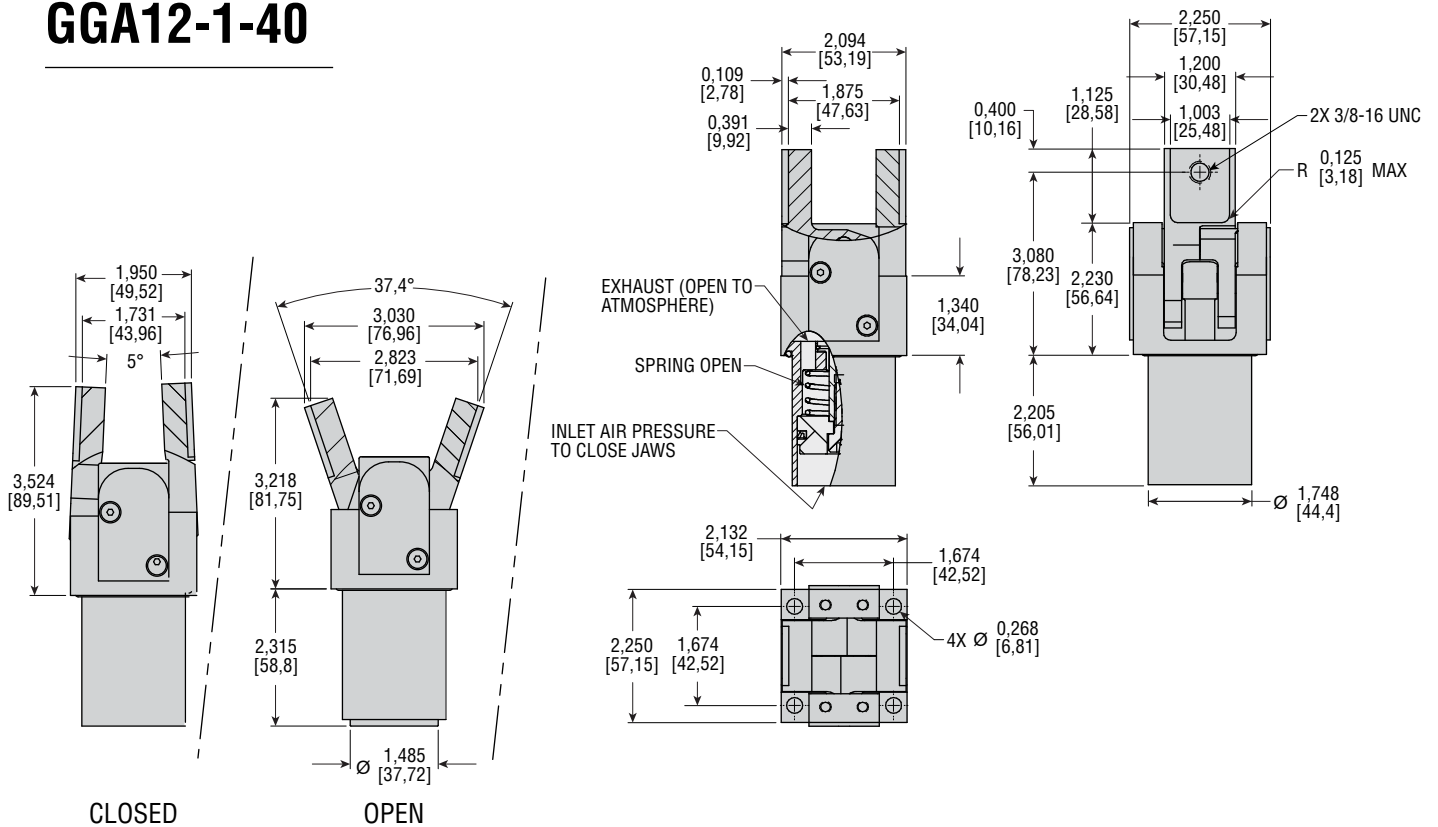
- **Mechanical Locking:** Gripper jaws are locked on full open, thus eliminating jaws and tooling being exposed to additional moments of inertia during gob/bottle transfer onto the conveyor.
- **Cam Slot Design:** For more grip force, the theoretical grip force with the jaws at parallel is about 347 N at 6 bar [78 lb at 87 psi] and 85 N at 2 bar [19 lb at 29 psi].
- **Integrated Smooth Closing™:** The cushioning is built into the cam slot of the jaws. This is for handling bottles softly to avoid finish cracks.
- **Very Precise Jaw Movement:** For consistent, repeatable pick up. No pin breaks or jaw play!

- **Drop-in Replacement:** Replaces Emhart, BDF, Bottero, GPS, Rondot, GR<sup>2</sup>, Lattimer and other glass bottle forming machines
- **Anti-Wink:** Gripper jaws are locked on full open, thus reducing risk of defects in the container mouth rim.
- **Less Downtime:** Designed for more than 10 million cycles
- Easily field repairable, spare parts available upon request

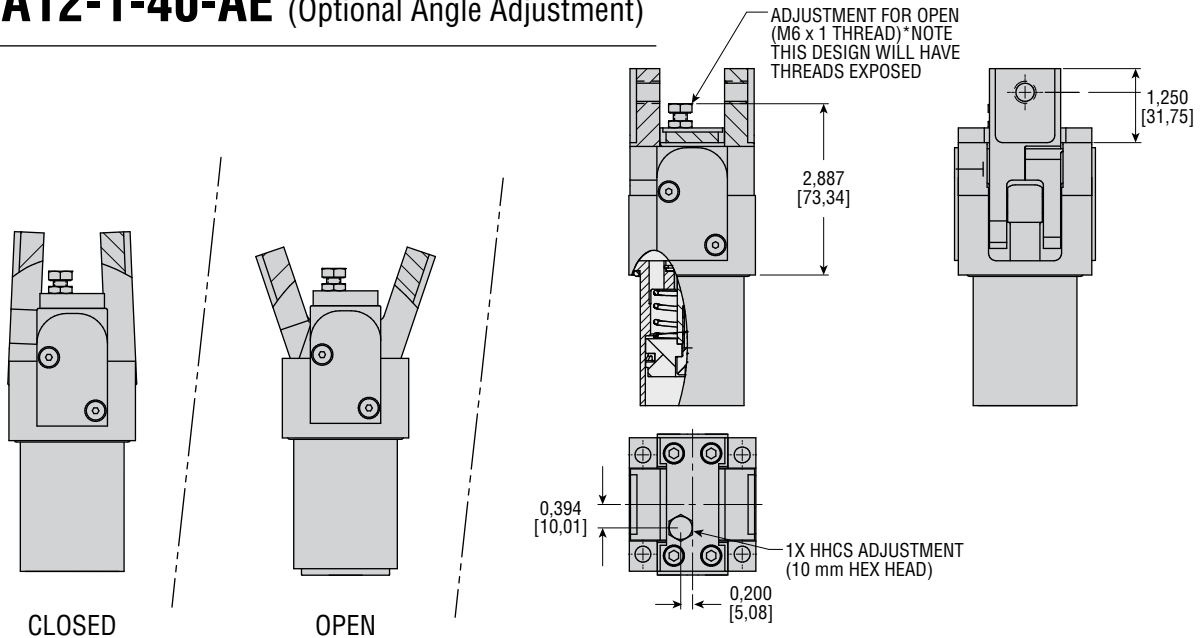
SPECIFICATIONS	SERIES GGA
WEIGHT	30,4 oz [862 g]
BORE	40 mm
JAWS OPEN ANGLE	37,4° (Adjustable on GGA12-1-40-AE)
JAWS FULL CLOSE ANGLE	5°
OPERATING PRESSURE	2 to 6 bar
JAW MATERIAL	Pre-hardened steel
BODY	Coated
SPRING OPEN	Spring installed between body and piston
ROD SCRAPER	High-temp (standard)

# DIMENSIONS: SERIES GGA GLASS GRIPPER

## GGA12-1-40



## GGA12-1-40-AE (Optional Angle Adjustment)



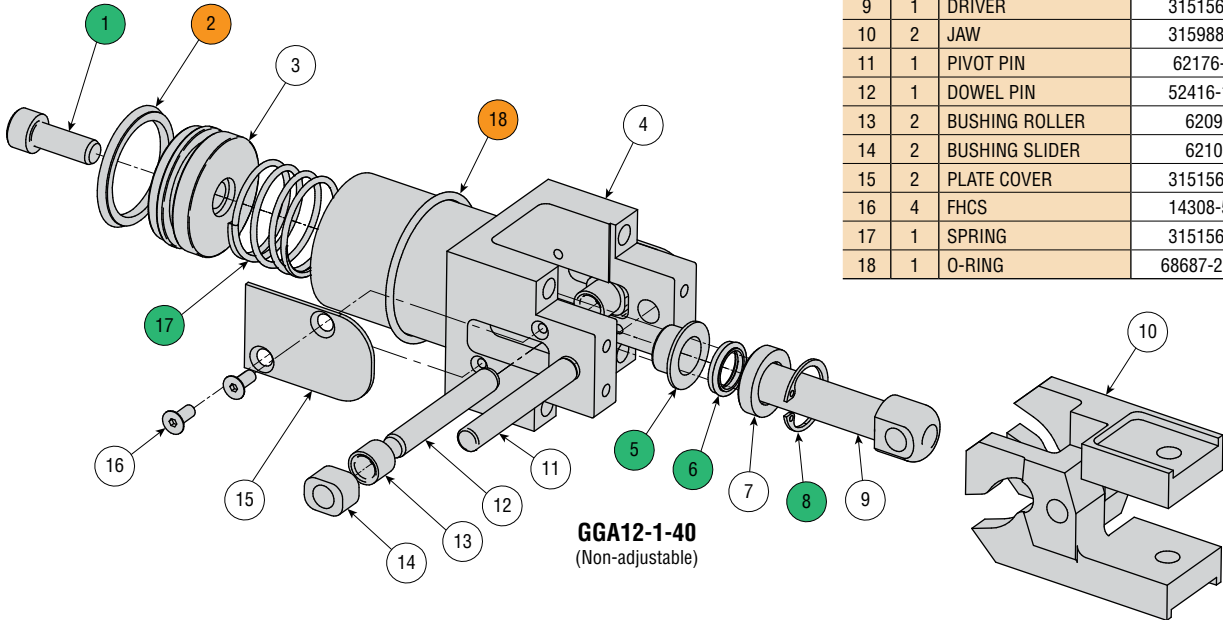
- NOTES:**  
 1) ALL DIMENSIONS ARE FOR REFERENCE ONLY  
 2) THEORETICAL GRIP FORCE AT PARALLEL IS ABOUT 18 LBS [80 N] AT 30 PSI [2 BAR] AT THREADED HOLES  
 3) SINGLE-ACTING OPERATION: - SPRING OPEN, AIR PRESSURE CLOSED  
 4) UNIT RATED FOR 400°F [204°C]

# PARTS LIST: SERIES GGA GLASS GRIPPER

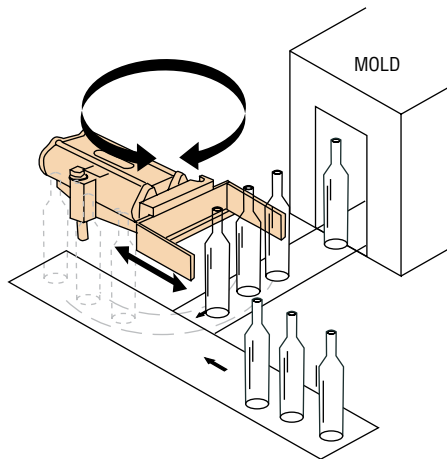
KIT DESCRIPTION	KIT NUMBER	COLOR CODE*
SEAL KIT	Full unit description and -H9000	
REPAIR KIT	Full unit description and -H9010	

\* Color code designates parts to be included in kit

KEY	QTY	PART DESCRIPTION	PART NUMBER
1	1	SHCS	14308-140
2	2	PISTON SEAL	63624-012-2
3	1	PISTON	88059
4	1	BODY	315988-01
5	1	BEARING	86603-020
6	1	ROD SCRAPER	82528-005-02
7	1	SCRAPER HOUSING	315988-08
8	1	RETAINING RING	1987-028
9	1	DRIVER	315156-03
10	2	JAW	315988-02
11	1	PIVOT PIN	62176-04
12	1	DOWEL PIN	52416-111
13	2	BUSHING ROLLER	62098
14	2	BUSHING SLIDER	62100
15	2	PLATE COVER	315156-06
16	4	FHCS	14308-571
17	1	SPRING	315156-07
18	1	O-RING	68687-219-2



## OTHER GLASS SOLUTIONS: GLASS PUSHER SLIDE



Hot "ware" (bottles) are removed from the mold and released in front of the Pusher Slide which extends and rotates at the same speed as the adjacent conveyor system, delivering the product to the conveyor.

The PHD slide is designed to handle the high temperature of the environment as well as the dirt and molten glass that migrate onto the moving parts of the slide.



Tool plate included.  
Multiple options available.

### PRODUCTS:

- ML310814 (Slide and Tool Plate)
- ML310815 (Slide and Tool Plate)
- ML310035 (Slide only)
- Direct replacement for existing angle slides on Bottero and Emhart machines.
- Faster retract speed due to special built-in quick exhaust valve.
- Long life design due to the choice of seals, coatings, close tolerance machining, and assembly withstanding the environment.
- Rod scrapers prevent contamination of internal seals and bearings promoting longer life.
- Lower cost unit offered without position adjuster.
- Easily field repairable with repair and seal kits.
- Energy savings due to larger rods and 20% smaller bores.

To request a free CP10035B brochure, contact your local PHD distributor or visit [www.phdinc.com/resources/inforequest/](http://www.phdinc.com/resources/inforequest/)