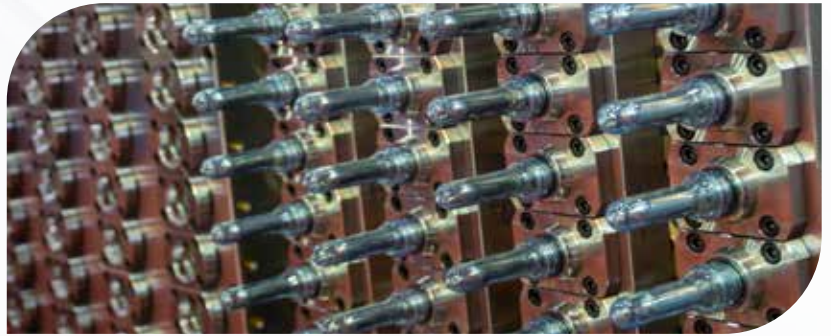
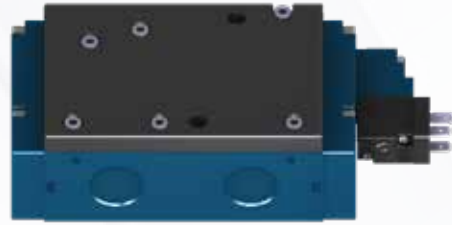


Solenoid Valves Upgrade Special Optimized Solutions for PET Preform Gate Valve & Preform Ejection

- High flow characteristics – Suitable for vacuum applications (67 series: 20.000 NI/ min - 20.0 Cv)
- Accurate and fast switching with extremely repeatable response times
- High resistance to contamination and pressure variation
- Check valve and accumulator to avoid motor boating, keep the pilot pressure constant and allow the valve to shift in case of inlet pressure drop
- Food grade greases available
- Same valve used for three functions on the machine: Air Assist - Gate Valve - Vacuum & Blow
- Less spare parts in inventory
- Superior reliability compared to OEM supplied valves - Less downtimes
- Manifold mounting solutions - No need to disassemble the manifold to replace solenoid valves



MAC FEATURES

- ✓ 3/2-way valve with the new technology patented 5/2-way pilot develops maximum shifting forces both ways
- ✓ Balanced spool unaffected by back pressure in the exhaust or by inlet restrictions
- ✓ Pilot valve with balanced poppet, high flow, short and consistent response times
- ✓ Short stroke with very high flow
- ✓ A large checked accumulator which supplies the pilot and air / spring return for consistent shifting
- ✓ Bonded spool with minimum friction, shifting in a glass-like finished bore
- ✓ Wiping effect eliminates sticking
- ✓ Burn out proof MAC solenoid, life time guarantee on coils

OPTIONS

- ✓ Repair kit available for the complete valve
- ✓ Approved food grade greases
- ✓ Stainless steel screws & washdown modification
- ✓ Modification for high temperatures (up to 70 °C)
- ✓ Manifold mounting available for user-friendly maintenance
- ✓ Availability of transition plates and manifold bases for direct drop-in on existing solutions (please consult factory)
- ✓ LED indicators on valves optional
- ✓ Wide range of coils and electrical connectors

MAC Valves - Highly engineered solutions for the highest performing applications since 1948



MAC Valves Inc, Wixom, Michigan - MAC Valves Inc, Dundee, Michigan
MAC Valves Europe Inc, Liège, Belgium - MAC Valves Asia Inc, Taiwan

To find your local distributor, visit www.macvalves.com



Solenoid Valves Upgrade Special Optimized Solutions for PET Preform Injection Molding Equipment

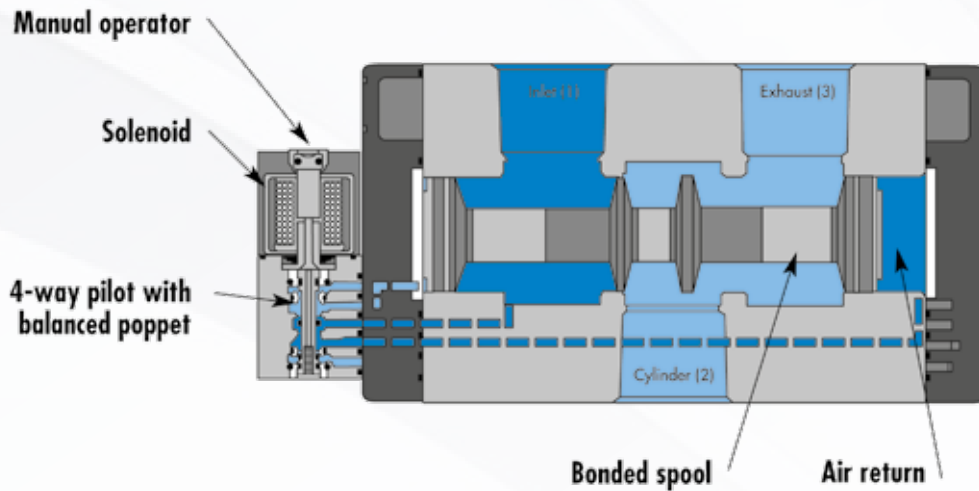
MAC Response Times and Flows per Function

	Valve Series	Flow* (NI/min)	ERT (ms)** @ 5,4 W	DRT (ms)** @ 5,4 W
Gate Valve	67	20 000	29	21
Mechanical Eject	92	1 200	8	7
Air Assist / Vacuum & Blow	67 ISO 3	20 000 6 100	29 16,2	21 13,6

*Manufacturers published flows

**Response times for 67, Iso 3 and 92 series with 24 V / 5,4 W coil

Technical Data



CPR® is a proprietary ROI process utilized by MAC and the MDN (MAC Distributor Network) to maximize customer profitability.

The CPR® process has been utilized with hundreds of customers to propose over \$150 million in real bottom line savings (implementing \$105 million) since 2010.

Please contact your local MDN Distributor to calculate the ROI relevant to your situation through our CPR®.



Solenoid Valves Upgrade Special Optimized Solutions for PET Preform Injection Molding Equipment

Gate Valve

COMPETITION	MAC VALVES	DIMENSIONS (mm) & FOOTPRINT
OEM Supplied Solution for Gate Valve	MAC 67 Series	
<p>HOW TO ORDER: Valve: 2 x 67A-G1-GAB-DM-DDAJ-1 JD/2632 Base: 1 x EBM67A/EF14</p>		



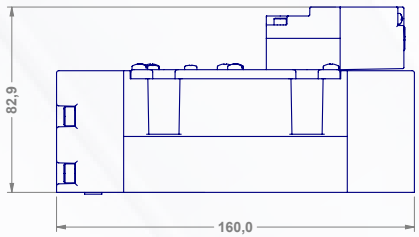


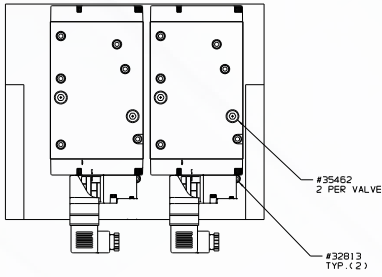
Preform Injection

COMPETITION	MAC VALVES	DIMENSIONS (mm) & FOOTPRINT
OEM Supplied Solution for Mechanical Eject	MAC 92 Series	
<p>HOW TO ORDER: 92B-AAB-000-DM-DDAP-1DM 1. M-92008-01 for Numatics Mark 15 2. M-92007-01 for Numatics Mark 8</p>		
OEM Supplied Solution for Air Assist	MAC 67 Series	
<p>HOW TO ORDER: 300T Presses: Inline valve solution: 1x 67A-G1-AAB-DM-DDAJ-1 JD/2632 Manifold solution: 1x valve 67A-G1-GAB-DM-DDAJ-1 JD/2632 + 1x base: U0249/EB25 600T Presses: Inline Valve solution: 2 x 67A-G1-AAB-DM-DDAJ-1 JD/2632 Manifold solution: 2x valves 67A-G1-GAB-DM-DDAJ-1 JD/2632 + 2x bases: U0249/EB25</p>		



Solenoid Valves Upgrade Special Optimized Solutions for PET Preform Injection Molding Equipment

Preform Injection

COMPETITION	MAC VALVES	DIMENSIONS (mm) & FOOTPRINT
<p>OEM Supplied Solution for Vacuum & Blow</p> 	<p>MAC ISO 3</p> 	
<p>HOW TO ORDER: 300T Presses: Blow Valve: 1 x MV-P3A-AJDB-DM-DDAP-1DM Mod. 724 I Vacuum valves: 3 x MV-P3A-AJDC-DM-DDAP-1DM Adapter plate / Blow valve: 1 x M-P3002-02 Adapter plate Vacuum valve: 3 x M-P3002-01</p> <p>600T Presses: Blow Valve: 1 x MV-P3A-AJDB-DM-DDAP-1DM Mod. 724 I Vacuum valves: 6 x MV-P3A-AJDC-DM-DDAP-1DM Adapter plate / Blow valve: 1 x M-P3002-02 Adapter plate / Vacuum valve: 6 x M-P3002-01</p>		
<p>OEM Supplied Solution for Vacuum & Blow</p> 	<p>MAC 67 Series</p> 	
<p>HOW TO ORDER: 300T Presses: SMA2221 with: 4x 67A-G1-GAB-DM-DDAJ-1JD / 2632 1x EBM67A-10017-04</p> <p>600T Presses: SMA2220 with: 7x 67A-G1-GAB-DM-DDAJ-1JD / 2632 1x EBM67A-10016-07</p>		

